

4.1.1. INFRASTRUCTURE FACILITIES AT MADURAI INSTITUTE OF SOCIAL SCIENCES

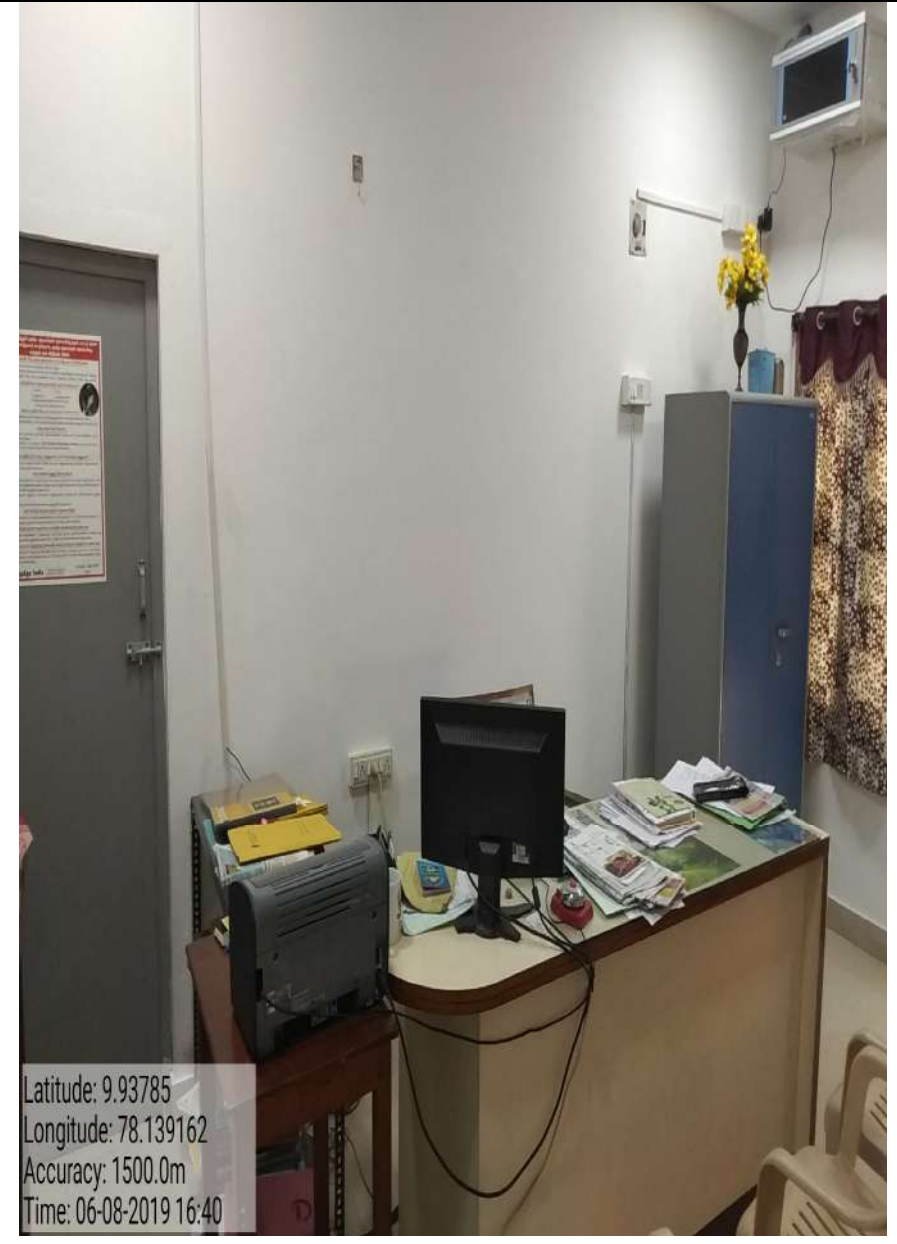
Administrative Office



College Office



Principal Office



Staff Room



Latitude: 9.939514
Longitude: 78.14089
Elevation: 134.51m
Accuracy: 19.7m
Time: 06-08-2019 16:47



Latitude: 9.939519
Longitude: 78.140915
Elevation: 134.51m
Accuracy: 48.5m
Time: 06-08-2019 16:48

Auditorium & Discussion Rooms



Indoor Sports Auditorium



Latitude: 9.939473
Longitude: 78.140343
Elevation: 142.51m
Accuracy: 4.0m
Time: 04-06-2019 16:12

Exam Hall cum Auditorium



Latitude: 9.93916
Longitude: 78.141073
Elevation: 127.51m
Accuracy: 18.2m
Time: 06-08-2019 16:07

ICT enabled Class Rooms



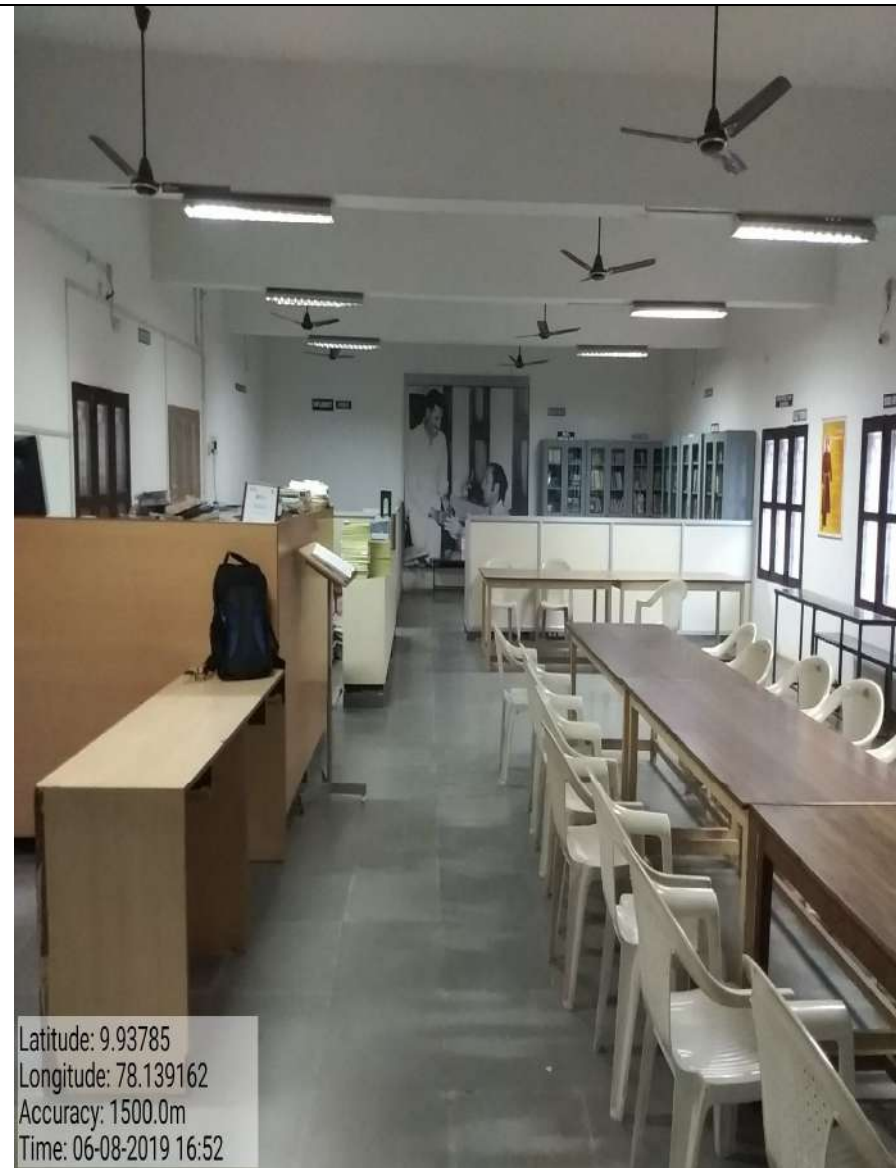
Computer Lab



Hostel Facilities



Library Facilities



Canteen Facility



Latitude: 9.938794
Longitude: 78.140609
Elevation: 136.51m
Accuracy: 9.0m
Time: 04-06-2019 16:01

College Bus



Latitude: 9.938826
Longitude: 78.140701
Elevation: 141.51m
Accuracy: 8.0m
Time: 04-06-2019 15:59

Parking Facility



Latitude: 9.939554
Longitude: 78.140199
Elevation: 136.51m
Accuracy: 9.0m
Time: 04-06-2019 16:12

Open Ground



Latitude: 9.939349
Longitude: 78.140661
Elevation: 126.51m
Accuracy: 7.0m
Time: 04-06-2019 15:13



Latitude: 9.939349
Longitude: 78.140661
Elevation: 126.51m
Accuracy: 7.0m
Time: 04-06-2019 16:05